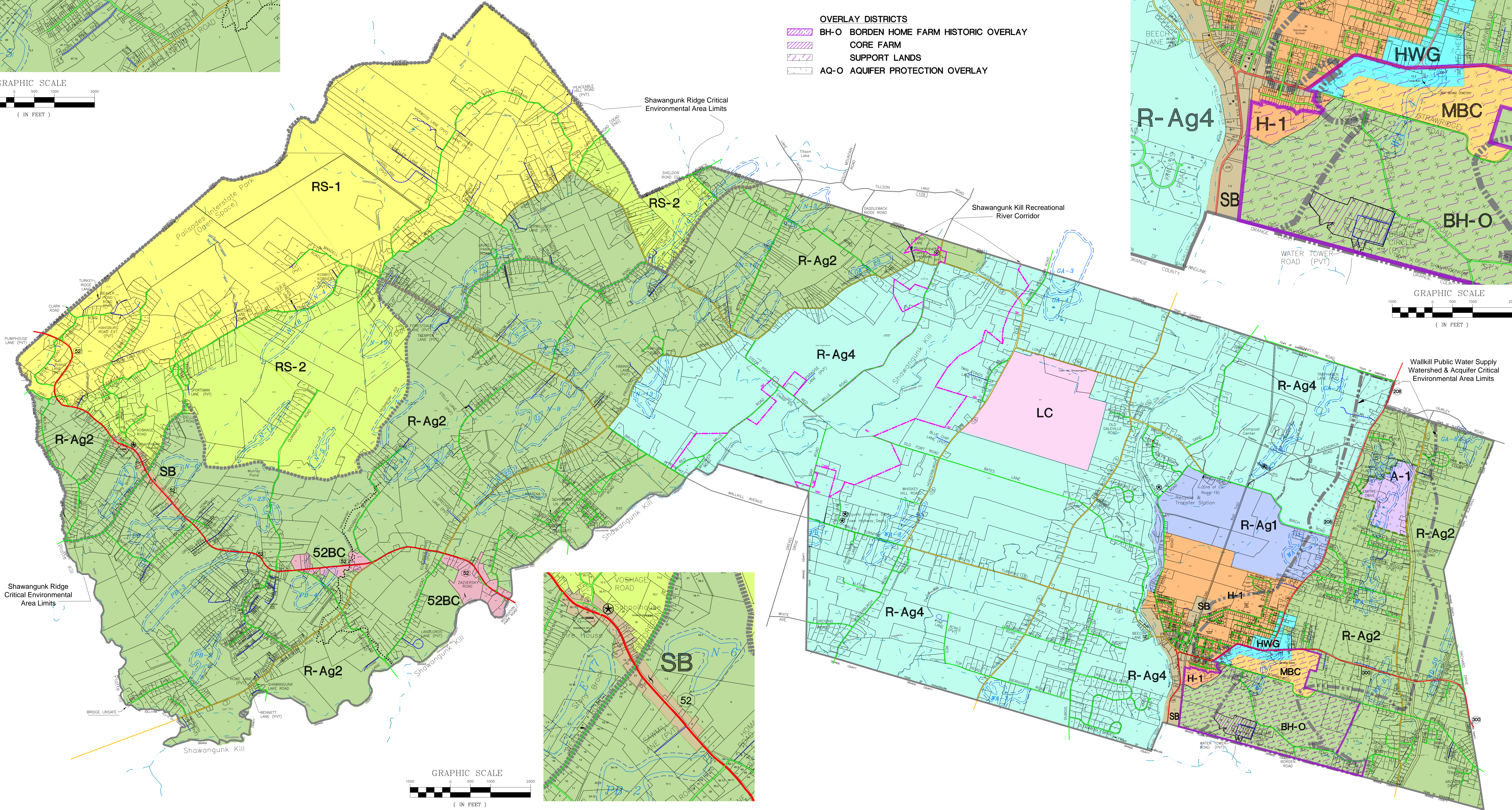
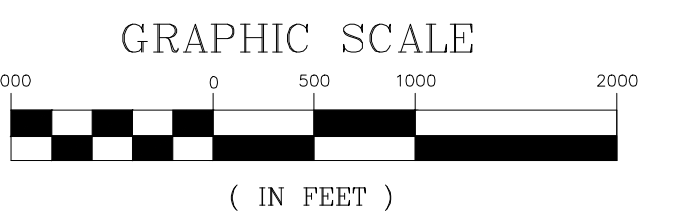
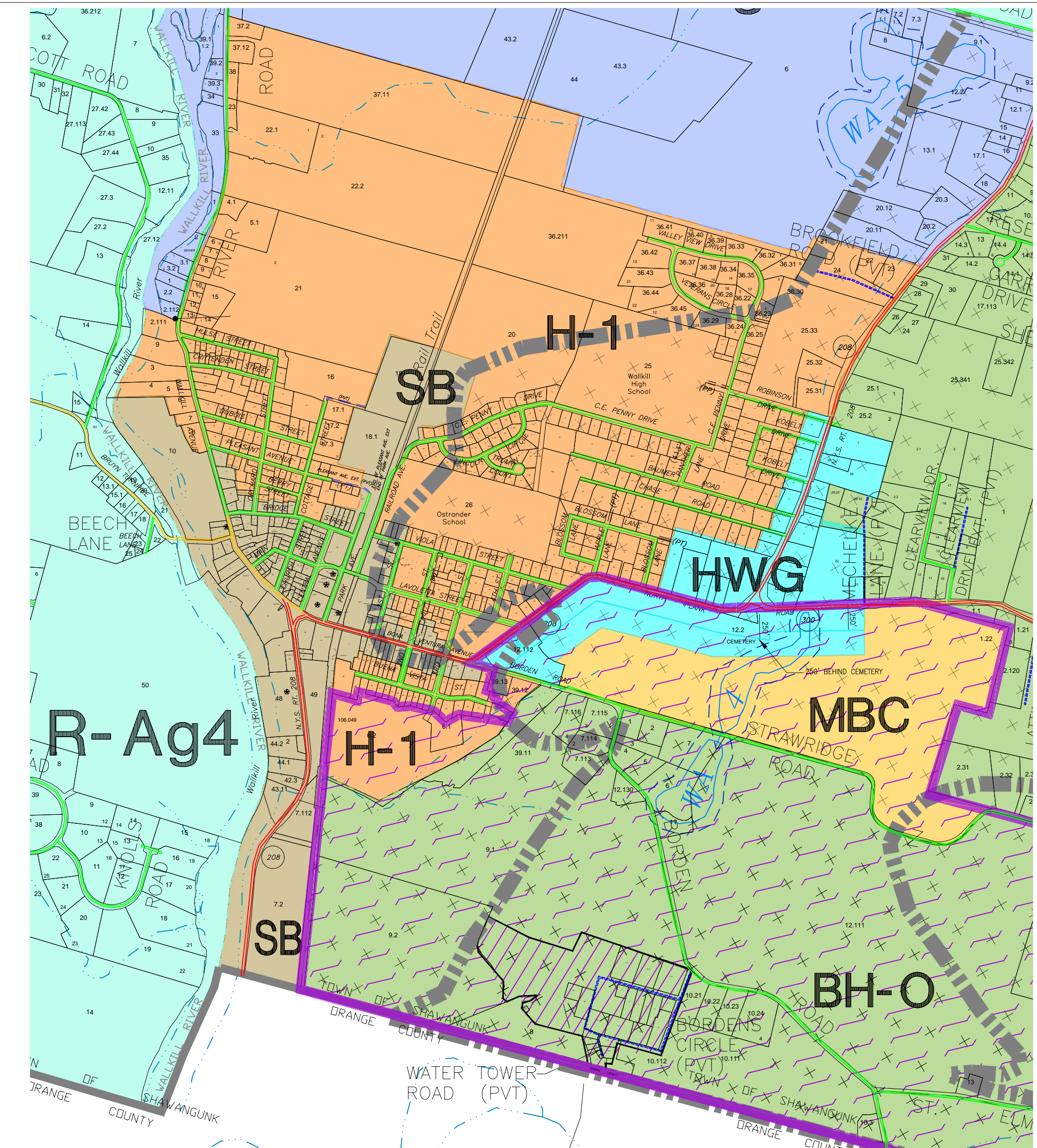


- Legend**
- COUNTY ROAD NUMBER
 - STATE ROAD NUMBER
 - ▬ SHAWANGUNK RIDGE CRITICAL ENVIRONMENTAL AREA
 - ▬ WALKKILL PUBLIC WATER SUPPLY WATERSHED & AQUIFER CRITICAL ENVIRONMENTAL AREA
 - ▬ SHAWANGUNK KILL RECREATIONAL RIVER CORRIDOR
 - ▬ TOWN ROAD
 - ▬ PRIVATE ROADS
 - ▬ COUNTY ROADS
 - ▬ STATE ROADS
 - ▬ PRISON ROADS
 - ▬ 100' WETLAND BUFFER
 - X-1 APPROXIMATE LIMITS OF N.Y.S.D.E.C. DESIGNATED WETLANDS & DESIGNATION NUMBER
THE D.E.C. SHOULD BE CONSULTED FOR THE ACTUAL BOUNDARIES

- BASE ZONING DISTRICTS**
- LC LAND CONSERVATION DISTRICT
 - RS-1 RIDGE STEWARDSHIP DISTRICT #1
 - RS-2 RIDGE STEWARDSHIP DISTRICT #2
 - R-Ag1 RESIDENTIAL-AGRICULTURE
 - R-Ag2 RESIDENTIAL-AGRICULTURE
 - R-Ag4 RESIDENTIAL-AGRICULTURE
 - H-1 HAMLET
 - SB SMALL BUSINESS
 - HWG HAMLET OF WALKKILL GATEWAY
 - MB-C MIXED USE BUSINESS-CONSERVATION
 - A-1 AIRPORT-INDUSTRIAL
 - 52BC ROUTE 52 BUSINESS CORRIDOR

- OVERLAY DISTRICTS**
- BH-O BORDEN HOME FARM HISTORIC OVERLAY
 - CORE FARM
 - SUPPORT LANDS
 - AQ-O AQUIFER PROTECTION OVERLAY

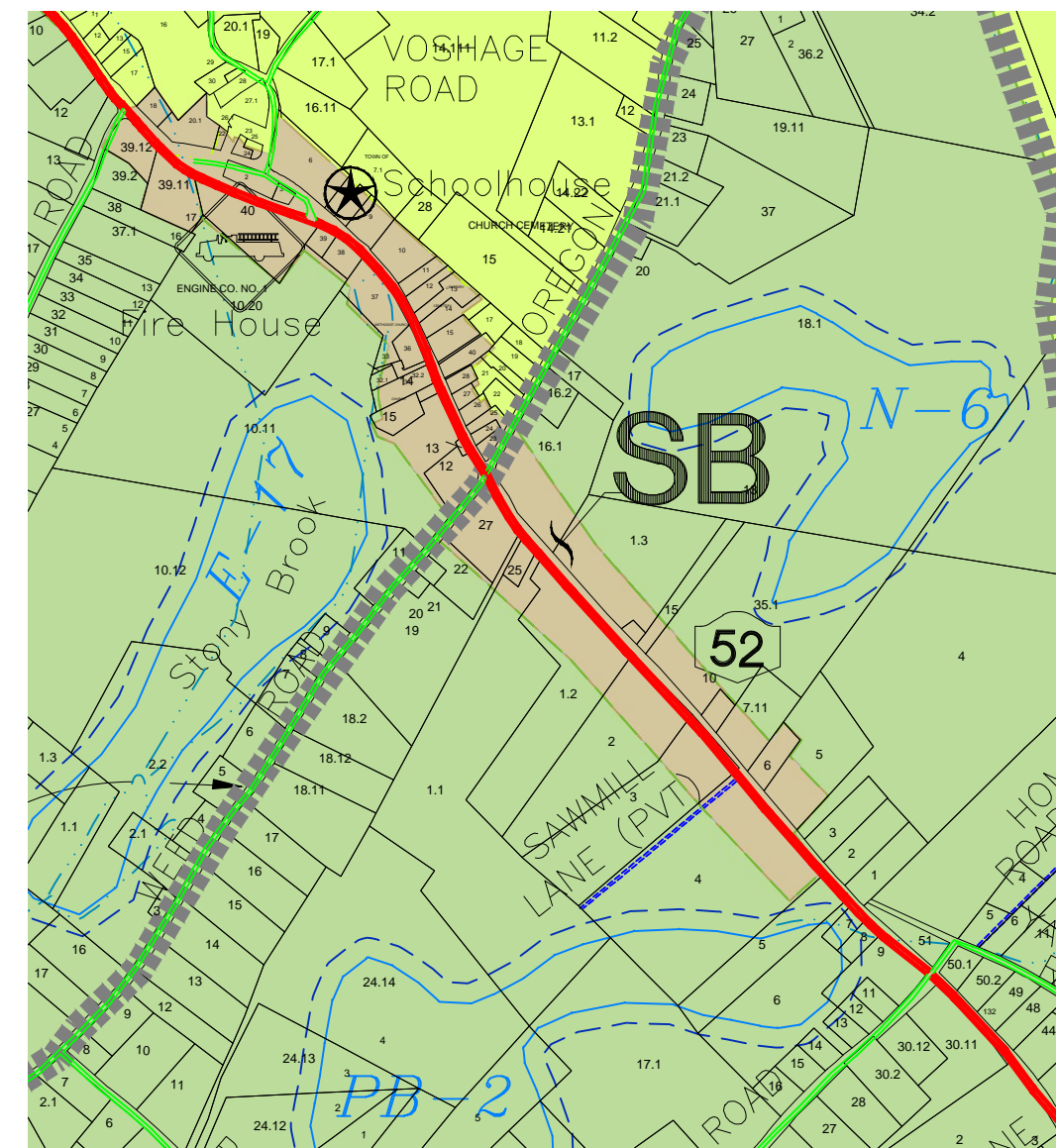
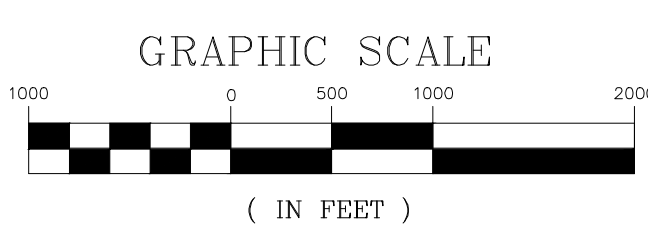


Shawangunk Ridge Critical Environmental Area Limits

Shawangunk Ridge Critical Environmental Area Limits

Shawangunk Kill Recreational River Corridor

Walkkill Public Water Supply Watershed & Aquifer Critical Environmental Area Limits



Official Zoning Map Adopted by the Shawangunk Town Board on August 3, 2023

Town of Shawangunk, Ulster County, NY

Town established on March 7, 1788

